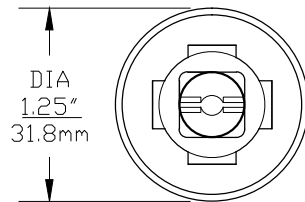


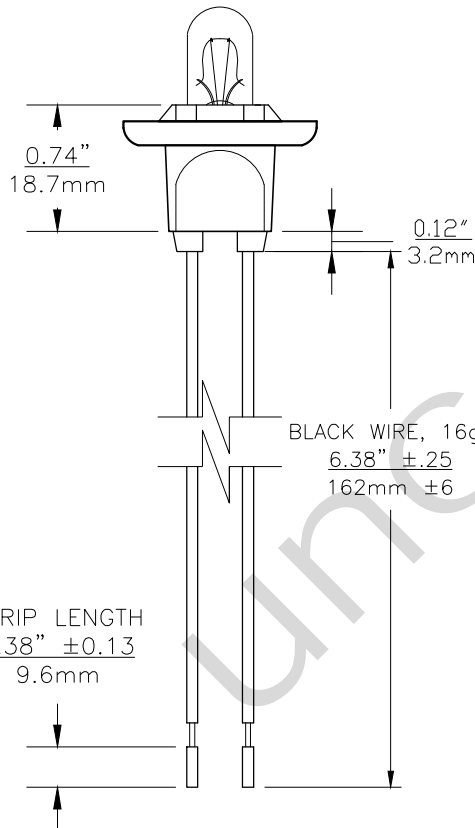


PART NO.	BASE TYPE	DESIGN VOLTS	DESIGN AMPS	MSCD	FILAMENT TYPE	AVERAGE LIFE HOURS	REVISIONS			
							REV #	DESCRIPTION	DATE	APPROVED
194WS-K	Glass Wedge T-3 1/4 (W2.1X9.2d)	14.0V	0.27±10%	2 ±20%	C-2F	2500	1	ISSUED	06/04/2014	R.M.



DIA
1.25"
31.8mm

TOP VIEW



0.74"
18.7mm

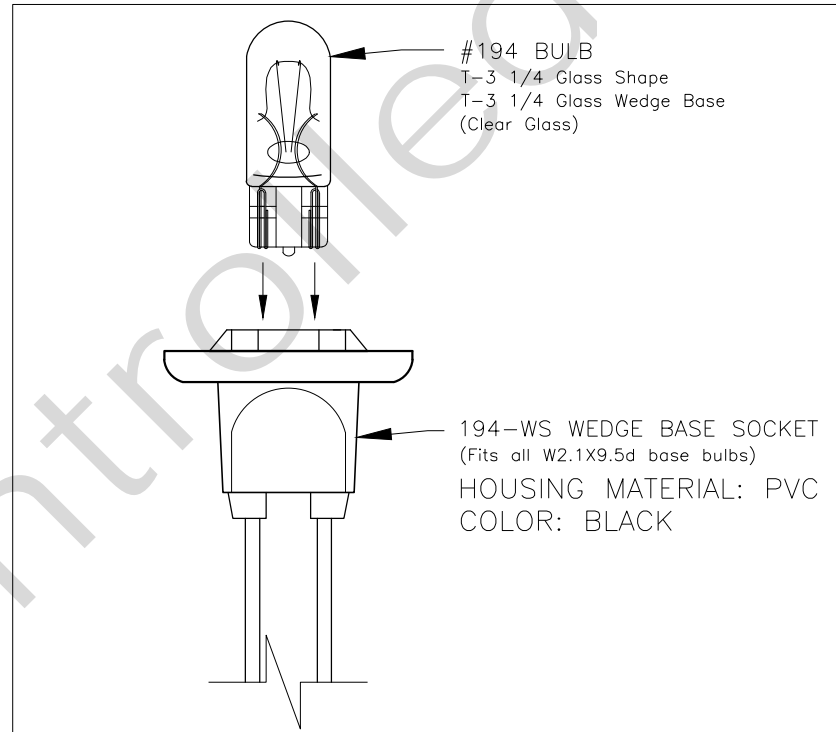
0.12"
3.2mm

BLACK WIRE, 16ga
6.38" ±.25
162mm ±6

STRIP LENGTH
0.38" ±0.13
9.6mm

0° VIEW

**NOMINAL
DIMENSIONS
ON SOCKET**



#194 BULB
T-3 1/4 Glass Shape
T-3 1/4 Glass Wedge Base
(Clear Glass)

194-WS WEDGE BASE SOCKET
(Fits all W2.1X9.5d base bulbs)
HOUSING MATERIAL: PVC
COLOR: BLACK

KIT INFORMATION

Note: Made according to SAE specifications



UNLESS OTHERWISE SPECIFIED: DIMENSIONS ARE IN INCHES TOLERANCES DECIMALS ANGULAR .XX ± .05 ± 0.5° .XXX ± .010 FRACTIONAL ± 1/64		CEC INDUSTRIES LTD 599 BOND STREET LINCOLNSHIRE, IL 60069			
DRAWN ROSE MEDINA		DATE 06/04/2014		TITLE LIGHT BULB NO. 194WS-K	
CHECKED		SIZE A	FSCM NO.	DWG NO. 194WS-K	REV 1
DESIGN		SCALE		PLOT SCALE	SHEET 1 OF 1
MATERIAL		FILE 194WS-K.pdf		DRAWING NOT TO SCALE	