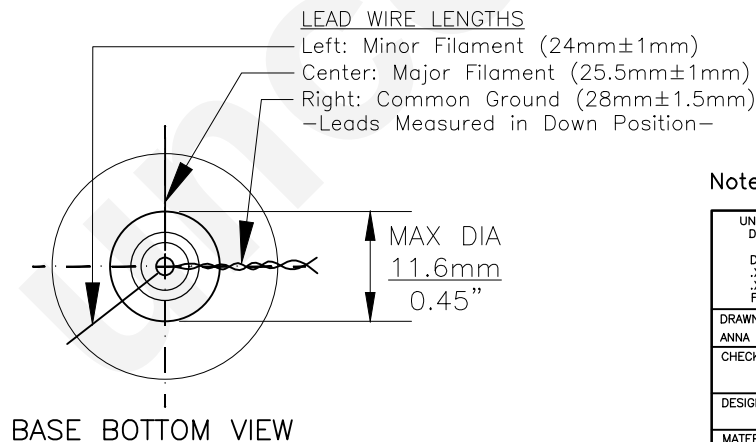
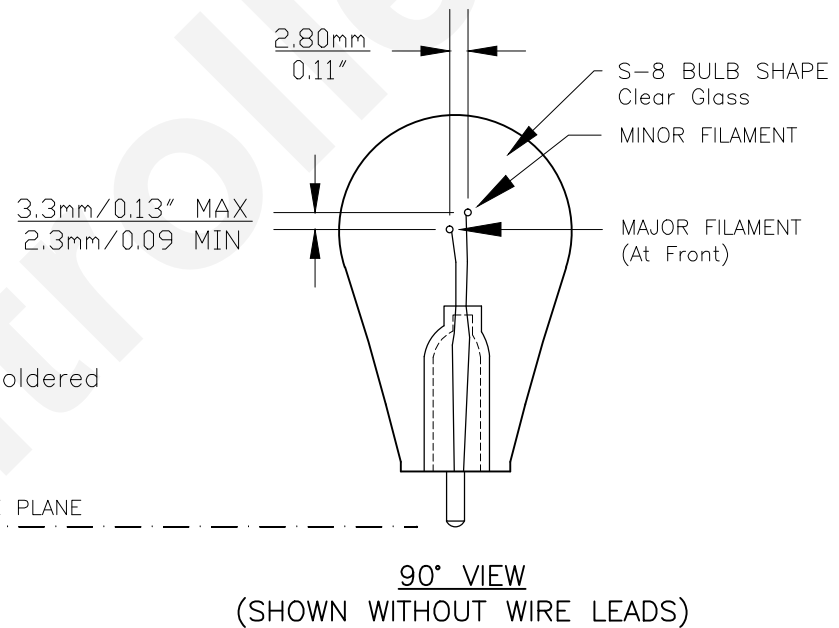
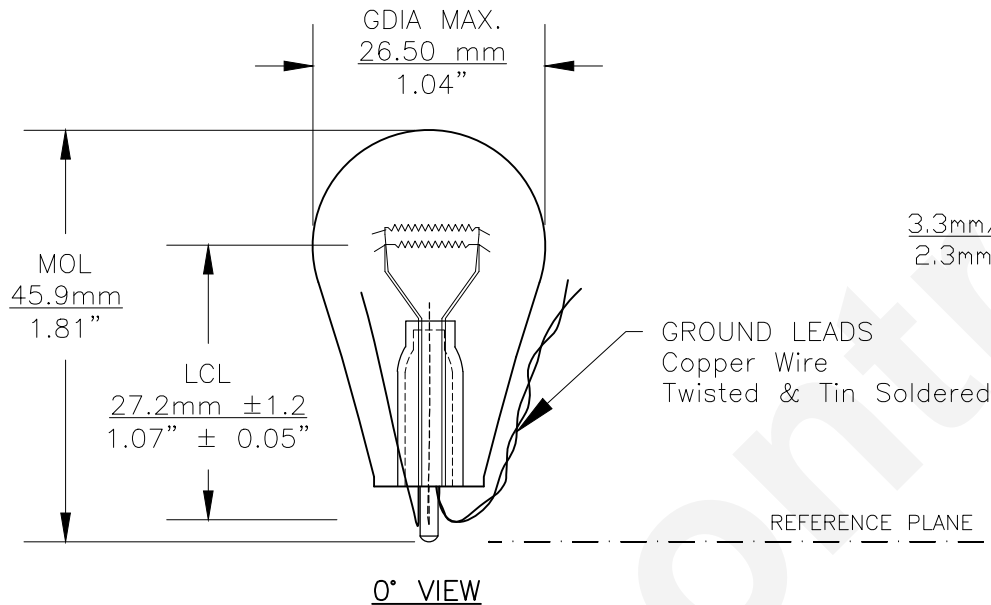




PART NO.	BASE TYPE	DESIGN VOLTS	DESIGN AMPS	MSCD	FILAMENT TYPE	AVERAGE LIFE HOURS
2058U	WIRE TERMINAL	12.8V 14.0V	2.1±5% 0.48±8%	32±10% 2±12%	C-6 C-6	1200 5000

REVISIONS			
REV #	DESCRIPTION	DATE	APPROVED
1	ISSUED	05/15/2003	A.S.
2	ADDITIONAL SPECIFICATIONS	10/19/2007	D.C.
3	REVISED LEAD LENGTH	05/09/2008	D.C.
4	REVISED LEAD LENGTH	11/07/2011	D.C.
5	POSITION OF THE MAJOR LEAD	01/23/2012	S.L.
6	CENTER LEAD 25.5MM	07/26/2012	D.C.
7	REDRAWN FOR ADDITIONAL VIEW	07/03/2014	R.M.



Note: Made according to SAE specifications



UNLESS OTHERWISE SPECIFIED: DIMENSIONS ARE IN INCHES TOLERANCES		CEC INDUSTRIES LTD			
DECIMALS      ANGULAR .XX ± .05      ± 0.5° .XXX ± .010 FRACTIONAL      ±1/64		599 BOND STREET LINCOLNSHIRE, IL 60069			
DRAWN ANNA SOLOVEYCHIK	DATE 05/15/2003	TITLE LIGHT BULB NO. 2058U			
CHECKED		SIZE A	FSCM NO.	DWG NO. 2058U	REV 7
DESIGN		SCALE	PLOT SCALE		SHEET 1 OF 1
MATERIAL		FILE 2058U.pdf	DRAWING NOT TO SCALE		