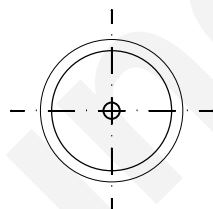
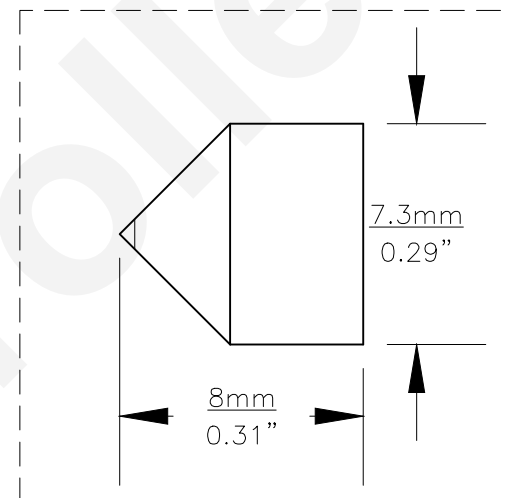
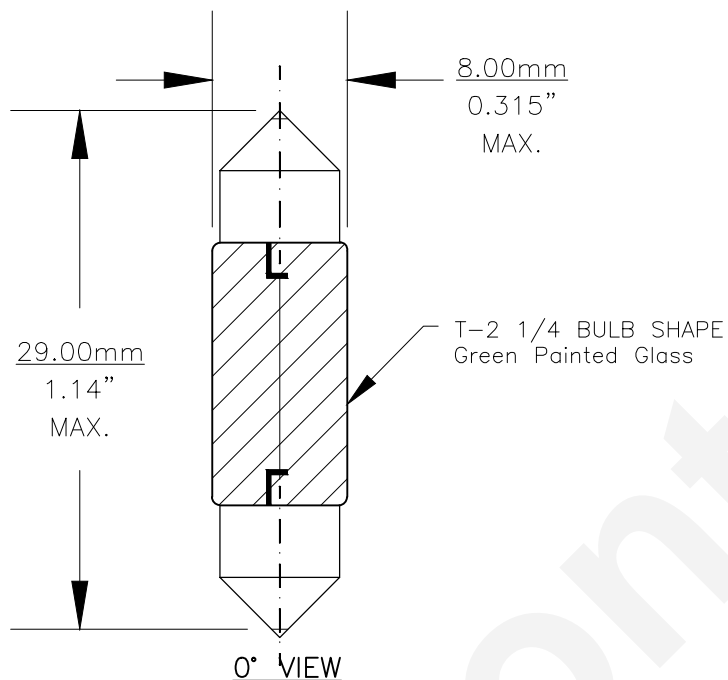




Since 1959

PART NO.	BASE TYPE	DESIGN VOLTS	DESIGN AMPS	MSCD	FILAMENT TYPE	AVERAGE LIFE HOURS	REVISIONS			
							REV #	DESCRIPTION	DATE	APPROVED
3021G	FESTOON CAP	12.0V	0.25±15%	2.0±30%	C-8	1000	1	ISSUED	09/03/2014	R.M.



BASE BOTTOM VIEW



Note: Made according to SAE specifications

UNLESS OTHERWISE SPECIFIED: DIMENSIONS ARE IN INCHES TOLERANCES DECIMALS .XX ± .05 ANGULAR ± 0.5° .XXX ± .010 FRACTIONAL ± 1/64		CEC INDUSTRIES LTD 599 BOND STREET LINCOLNSHIRE, IL 60069			
DRAWN ROSE MEDINA	DATE 09/03/2014	TITLE LIGHT BULB NO. 3021G			
CHECKED		SIZE A	FSCM NO.	DWG NO. 3021G	REV 1
DESIGN		SCALE	PLOT SCALE	SHEET 1 OF 1	
MATERIAL		FILE 3021G.pdf	DRAWING NOT TO SCALE		