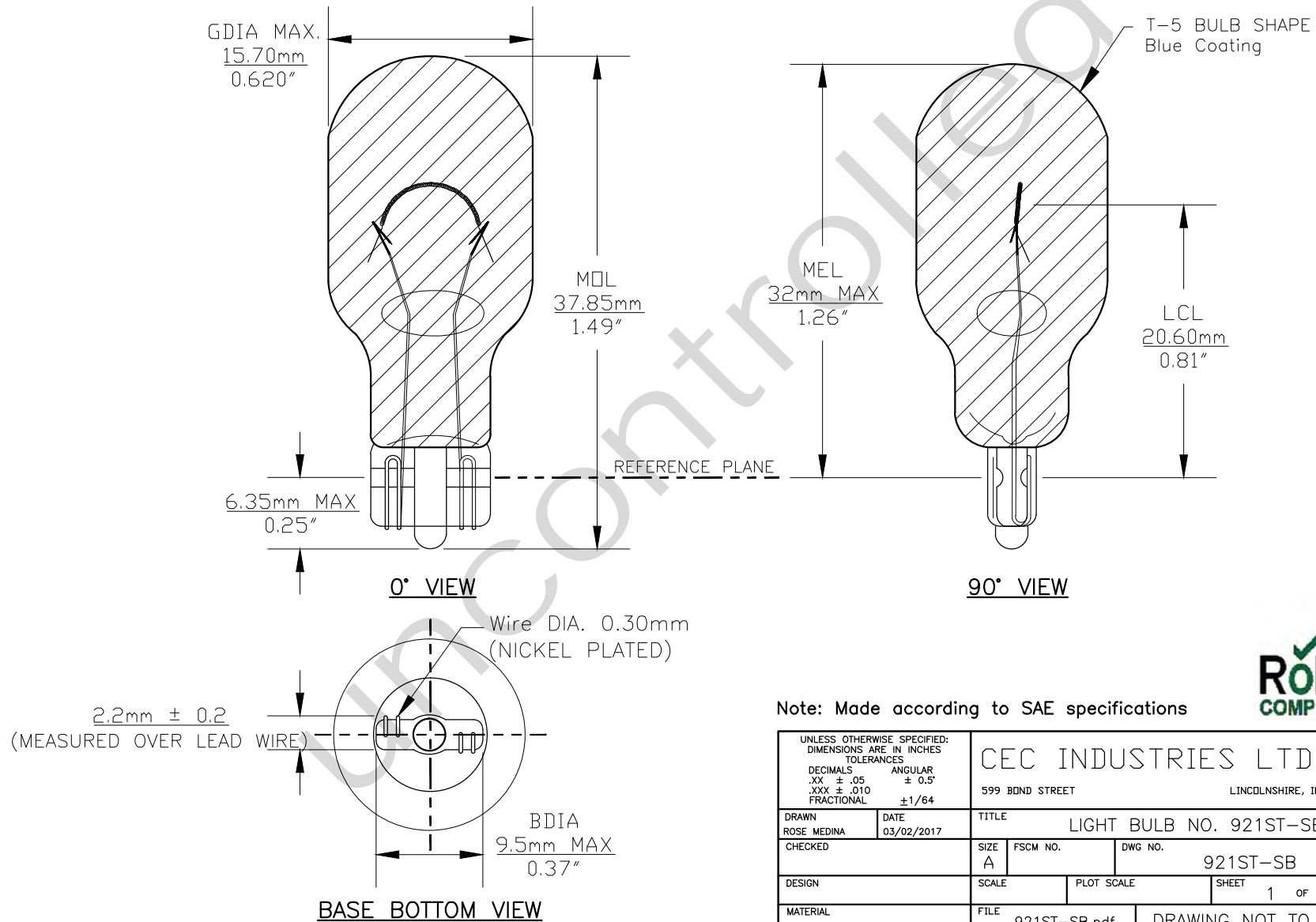




PART NO.	BASE TYPE	TEST VOLTS	DESIGN AMPS	MSCD	FILAMENT TYPE	AVERAGE LIFE HOURS	REVISIONS			
							REV #	DESCRIPTION	DATE	APPROVED
921ST-SB	Glass Wedge (T-5)	12.8V	1.40±10%	21 ±20%	C-2R	1000	1	ISSUED	03/02/2017	R.M.



Note: Made according to SAE specifications



UNLESS OTHERWISE SPECIFIED: DIMENSIONS ARE IN INCHES TOLERANCES DECIMALS .XX ± .05 ± 0.5° .XXX ± .010 FRACTIONAL ±1/64		CEC INDUSTRIES LTD 599 BOND STREET LINCOLNSHIRE, IL 60069			
DRAWN ROSE MEDINA		DATE 03/02/2017		TITLE LIGHT BULB NO. 921ST-SB	
CHECKED		SIZE A	FSCM NO.	DWG NO. 921ST-SB	REV 1
DESIGN		SCALE	PLOT SCALE		SHEET 1 OF 1
MATERIAL		FILE 921ST-SB.pdf	DRAWING NOT TO SCALE		